

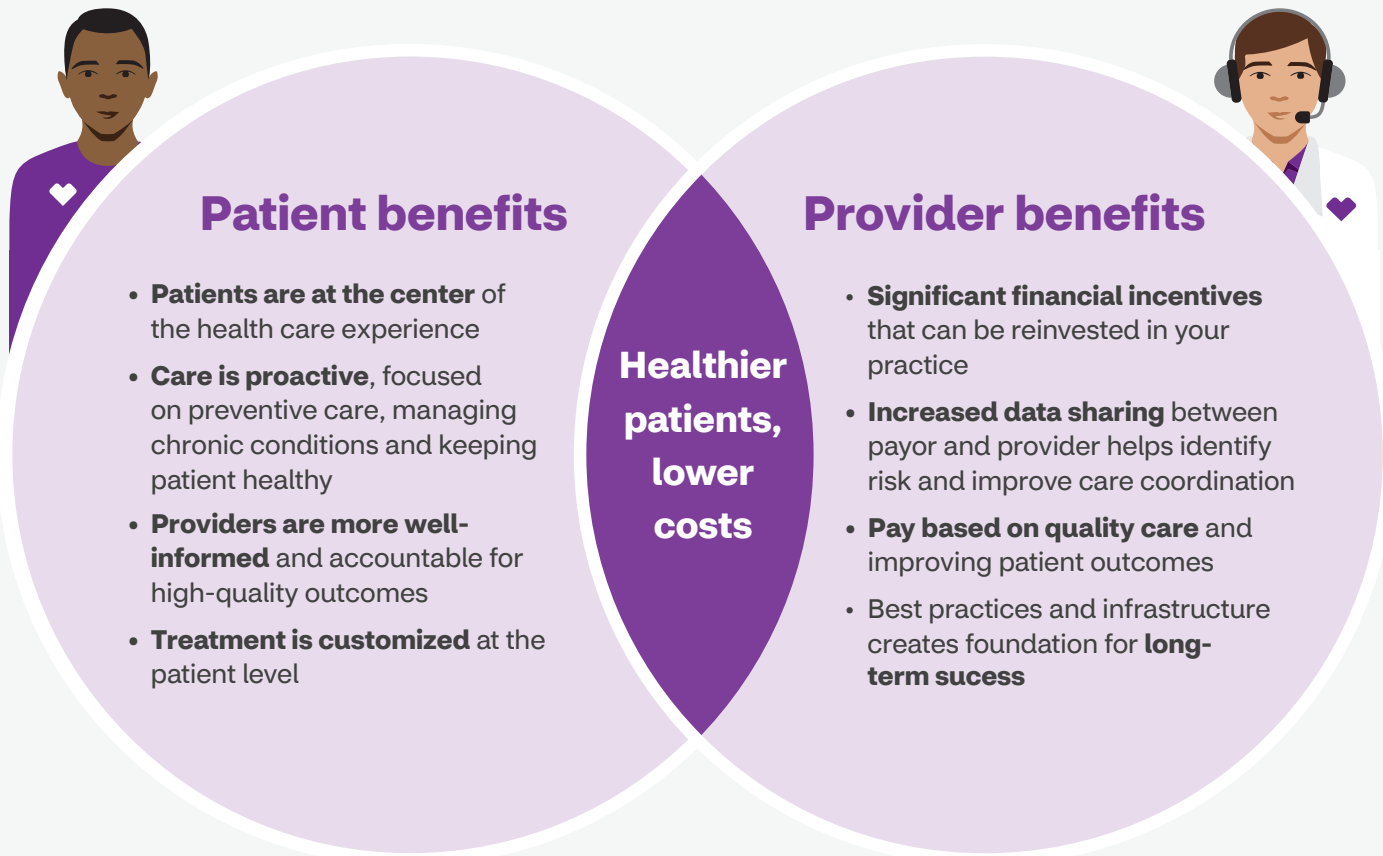
# It's a win-win



## Value-based care from Aetna Better Health® of Illinois

**Value-based care (VBC) is patient-centered care.** It's a health care delivery model that:

- Pays providers based on the health outcomes of their patients and the quality of services they provide.
- Focuses on preventative services and chronic disease management to improve members' quality of life.



### Our value-based providers at a glance



**19 distinct provider groups**



**35% of membership and 36% of total Medicaid spend** covered by VBC



**Nearly 3000 providers** across all regions of the state



Value-based providers **outperform** in quality measures

### Ensuring our providers succeed

**Provider Analytics Reporting Suite (PARS)**, actionable data to make sure patients receive the care they need



**Financial and quality targets** based on provider-specific population create a fair baseline for meaningful quality improvement and cost reduction



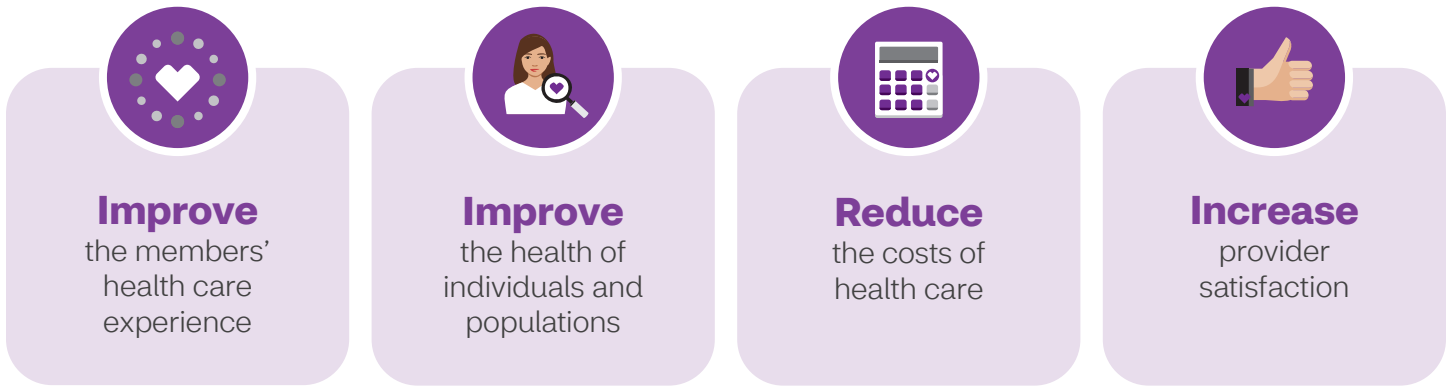
**Cross-functional work groups** including medical management, quality, pharmacy and network collaborate to establish best practices



# Better outcomes, lower costs

We're used to a health care system that takes care of people after they're already sick. Value-based care (VBC) moves beyond sick care and takes a proactive, comprehensive, data-driven approach to keeping people healthy.

## The goal of VBC is to:



## Value-based care (VBC) continuum

